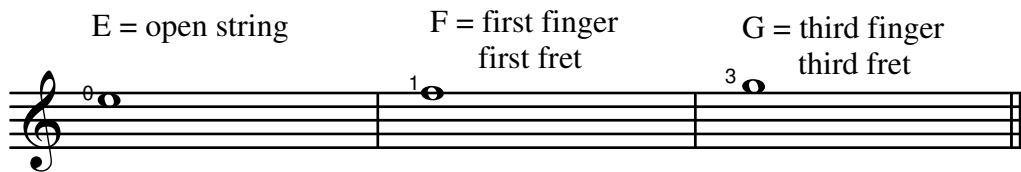


LESSON 2

Fingering Notes on the First String



When holding a note with a left-hand finger, be sure to use the tip of the finger and place it on the string directly in front of the fret wire. This is the position where it will be easiest to achieve a clear tone with the least amount of effort. If you position your fingertip too far back in the fret, it will take much more finger pressure to eliminate any buzzing or dullness of sound. Likewise, do not hold a note directly on top of the fret wire, as this will create a dull sound.

Let us begin by mastering one left-hand fingering at a time. Duet Etude #1 will use only the open **E** and the first-finger **F**, whereas Duet Etude #2 will use the open **E** and the third-finger **G**. Only when you feel very comfortable should you move on to Duet Etude #3 which uses all three notes.

One Finger Duet Etude #1

Two systems of musical notation for 'One Finger Duet Etude #1'. Each system consists of two staves, labeled 'I' and 'II'. The music is in 4/4 time and features a duet between the two staves. The first system has four measures, and the second system has four measures. Fingering instructions are written above the notes on staff I: 'i' for the open E and 'm' for the first-finger F. The notes on staff II are primarily eighth and quarter notes, providing a rhythmic accompaniment for the melody on staff I.

5.

One Finger Duet Etude #2

Two systems of musical notation for guitar, labeled I and II. The first system contains measures 1-4, and the second system contains measures 5-8. The music is in 4/4 time. The first system has fingerings: *i m i m i m i m i m i m*. The second system has fingerings: *i m i m i m i m i m i m i*. The first system includes triplets of eighth notes in measures 1 and 2.

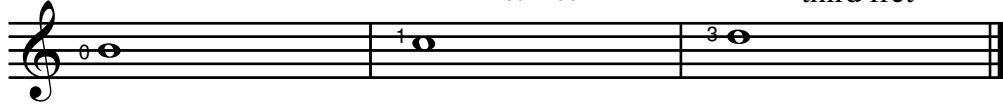
Two Finger Duet Etude #3

Two systems of musical notation for guitar, labeled I and II. The first system contains measures 1-4, and the second system contains measures 5-8. The music is in 4/4 time. The first system has fingerings: *i m i m i m i m i m i m i m*. The second system has fingerings: *i m i m i m i m i m i m i*. The first system includes triplets of eighth notes in measures 1 and 2.

LESSON 3

Fingering Notes on the Second String


B = open string C = first finger
first fret D = third finger
third fret



The image shows a single staff of music in treble clef. It contains three measures, each with a single note on the second string. The first measure has an open string note (B). The second measure has a note with a '1' above it, indicating the first fret (C). The third measure has a note with a '3' above it, indicating the third fret (D).

Once again we will set out to master one left-hand fingering at a time for the second string. Duet Etude #4 will use only the open **B** and the first-finger **C**, whereas Duet Etude #5 will use the open **B** and the third-finger **D**. When you are comfortable with these, move on to Duet Etude #6 which uses all three notes.

One Finger Duet Etude #4



The image shows two systems of musical notation for a duet. Each system consists of two staves, labeled I and II. The music is in 4/4 time. The first system has four measures. The second system also has four measures. Fingerings are indicated by letters 'i' and 'm' above the notes. The first system uses 'i' and 'm' for the first finger and middle finger respectively. The second system uses 'm' and 'i' for the middle finger and first finger respectively. The notes are primarily on the second string, with some notes on the first string in the second system.

7.

One Finger Duet Etude #5

Musical score for One Finger Duet Etude #5, measures 1-8. The score is in 4/4 time and consists of two staves, I and II. Staff I contains a sequence of chords and notes with fingerings *i* and *m*. Staff II contains a melodic line with eighth and quarter notes, including sharps. The piece concludes with a double bar line at the end of measure 8.

Two Finger Duet Etude #6

Musical score for Two Finger Duet Etude #6, measures 1-8. The score is in 4/4 time and consists of two staves, I and II. Staff I contains a sequence of chords and notes with fingerings *i*, *m*, and *i*. Staff II contains a melodic line with eighth and quarter notes. The piece concludes with a double bar line at the end of measure 8.